



Timetable

368 Tullow - Enniscorthy - New Ross

TULLOW TO NEW ROSS

Departs	Stops	Sat						Sun				
Tullow	<i>The Square</i>	-	-	14:20	-	-	-	-	14:20	-	-	-
Ballon	<i>Lucy Nolan's</i>	-	-	14:30	-	-	-	-	14:30	-	-	-
Kildavin	<i>Conway's Pub</i>	-	-	14:45	-	-	-	-	14:45	-	-	-
Bunclody	<i>Market Square</i>	08:10	-	14:50	-	18:20	19:50	10:00	14:50	-	18:20	19:50
Enniscorthy	<i>Templeshannon</i>	08:30	12:10	15:10	18:00	18:40	20:10	10:20	15:10	18:00	18:40	20:10
Clonroche	<i>Village</i>	08:50	12:30	15:30	18:20	-	20:30	10:40	15:30	18:20	-	-
Palace	<i>Crossroads, main road</i>	08:55	12:35	15:35	18:25	-	20:35	10:45	15:35	18:25	-	-
Irishtown	<i>Apex</i>	09:05	12:45	15:45	18:45	-	20:55	10:55	15:45	18:45	-	-
New Ross	<i>Harbour office</i>	09:10	12:50	15:50	18:50	-	21:00	11:00	15:50	18:50	-	-

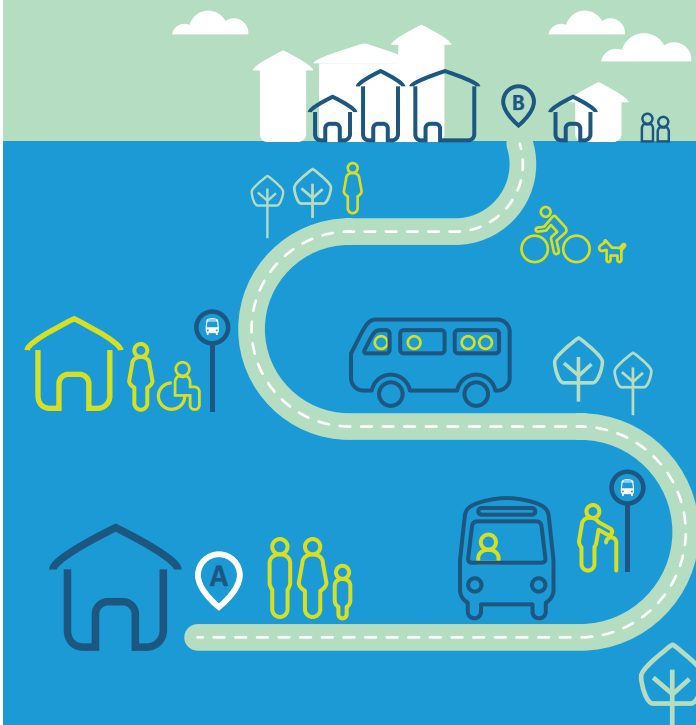
NEW ROSS TO TULLOW

Departs	Stops	Sat						Sun				
New Ross	<i>Supervalu</i>	-	09:30	12:50	16:50	18:50	22:50	-	12:50	16:50	18:50	-
Irishtown	<i>Opposite Apex</i>	-	09:35	12:55	16:55	18:55	22:55	-	12:55	16:55	18:55	-
Palace	<i>Cross roads main road</i>	-	09:45	13:05	17:05	19:05	23:05	-	13:05	17:05	19:05	-
Clonroche	<i>Village</i>	-	09:50	13:10	17:10	19:10	23:10	-	13:10	17:10	19:10	-
Enniscorthy	<i>Templeshannon (arrive)</i>	-	10:10	13:30	17:30	19:30	23:30	-	13:30	17:30	19:30	-
Enniscorthy	<i>(depart)</i>	07:20	-	13:30	17:30	-	-	08:20	13:30	17:30	19:30	-
Bunclody	<i>Church</i>	07:40	-	13:50	17:50	19:50	-	08:40	13:50	17:50	19:50	-
Kildavin	<i>Conway's Pub</i>	-	-	13:55	-	-	-	-	13:55	-	-	-
Ballon	<i>Nolans Garage</i>	-	-	14:10	-	-	-	-	14:10	-	-	-
Tullow	<i>The Square</i>	-	-	14:20	-	-	-	-	14:20	-	-	-



local link

Wexford



Route 368
Tullow - Enniscorthy - New Ross

timetable

368 Tullow - Enniscorthy - New Ross

TULLOW TO NEW ROSS

Departs	Stops	Mon - Fri											
Tullow	<i>The Square</i>	-	-	09:20	11:20	14:20	-	-	-	-	-	-	-
Ballon	<i>Lucy Nolan's</i>	-	-	09:30	11:30	14:30	-	-	-	-	-	-	-
Kildavin	<i>Conway's Pub</i>	-	-	09:45	11:45	14:45	-	-	-	-	-	-	-
Bunclody	<i>Market Square</i>	06:40	08:10	09:50	11:50	14:50	16:20	-	-	18:20	19:05	19:50	-
Enniscorthy	<i>Templeshannon</i>	07:05	08:30	10:10	12:10	15:10	16:40	17:10	18:00	18:40	19:35	20:10	-
Clonroche	<i>Village</i>	07:25	08:50	-	12:30	15:30	-	17:30	18:20	-	-	20:30	-
Palace	<i>Crossroads, main road</i>	07:30	08:55	-	12:35	15:35	-	17:35	18:25	-	-	20:35	-
Irishtown	<i>Apex</i>	07:40	09:05	-	12:45	15:45	-	17:45	18:45	-	-	20:55	-
New Ross	<i>Harbour office</i>	07:45	09:10	-	12:50	15:50	-	17:50	18:50	-	-	21:00	-

NEW ROSS TO TULLOW

Departs	Stops	Mon - Fri											
New Ross	<i>Supervalu</i>	-	07:45	09:30	-	12:50	16:50	18:00	18:50	22:50	-	-	-
Irishtown	<i>Opposite Apex</i>	-	07:50	09:35	-	12:55	17:05	18:05	18:55	22:55	-	-	-
Palace	<i>Cross roads main road</i>	-	08:00	09:45	-	13:05	17:10	18:15	19:05	23:05	-	-	-
Clonroche	<i>Village</i>	-	08:05	09:50	-	13:10	17:20	18:20	19:10	23:10	-	-	-
Enniscorthy	<i>Templeshannon (arrive)</i>	-	08:20	10:10	-	13:30	17:40	18:40	19:30	23:30	-	-	-
Enniscorthy	<i>(depart)</i>	07:20	08:20	10:20	-	13:30	17:40	18:40	-	-	-	-	-
Bunclody	<i>Church</i>	07:40	08:40	10:40	-	13:50	18:00	19:00	19:50	-	-	-	-
Kildavin	<i>Conway's Pub</i>	-	08:45	10:45	-	13:55	-	-	-	-	-	-	-
Ballon	<i>Nolans Garage</i>	-	09:00	11:00	-	14:10	-	-	-	-	-	-	-
Tullow	<i>The Square</i>	-	09:10	11:10	-	14:20	-	-	-	-	-	-	-

For more information



Tel: 053 9196276



Email: wexford@locallink.ie
Web: www.locallink.ie



Operated by: **Local Link Wexford, Block F, County Hall, Carricklawn, Co. Wexford**



For information on fares please visit:
www.locallink.ie
Free Travel Pass holders travel free



Ask your driver or other staff member for assistance



Connections:
Tullow & Bunclody: Connections with Bus Éireann Route 132 to and from Dublin

Enniscorthy: Connections with Bus Éireann Route 2 and Wexford Bus Route 740 to and from Wexford & Dublin
Connections with Wexford Bus Route 376 to and from Carlow

New Ross: Connections with Bus Éireann Routes 4 & 370 to and from Waterford
Connections with Wexford Bus Route 340 to and from Waterford & Wexford

Full information on all available journeys and connections on National Journey Planner at www.transportforireland.ie

Information correct at time of print: **September 2017**